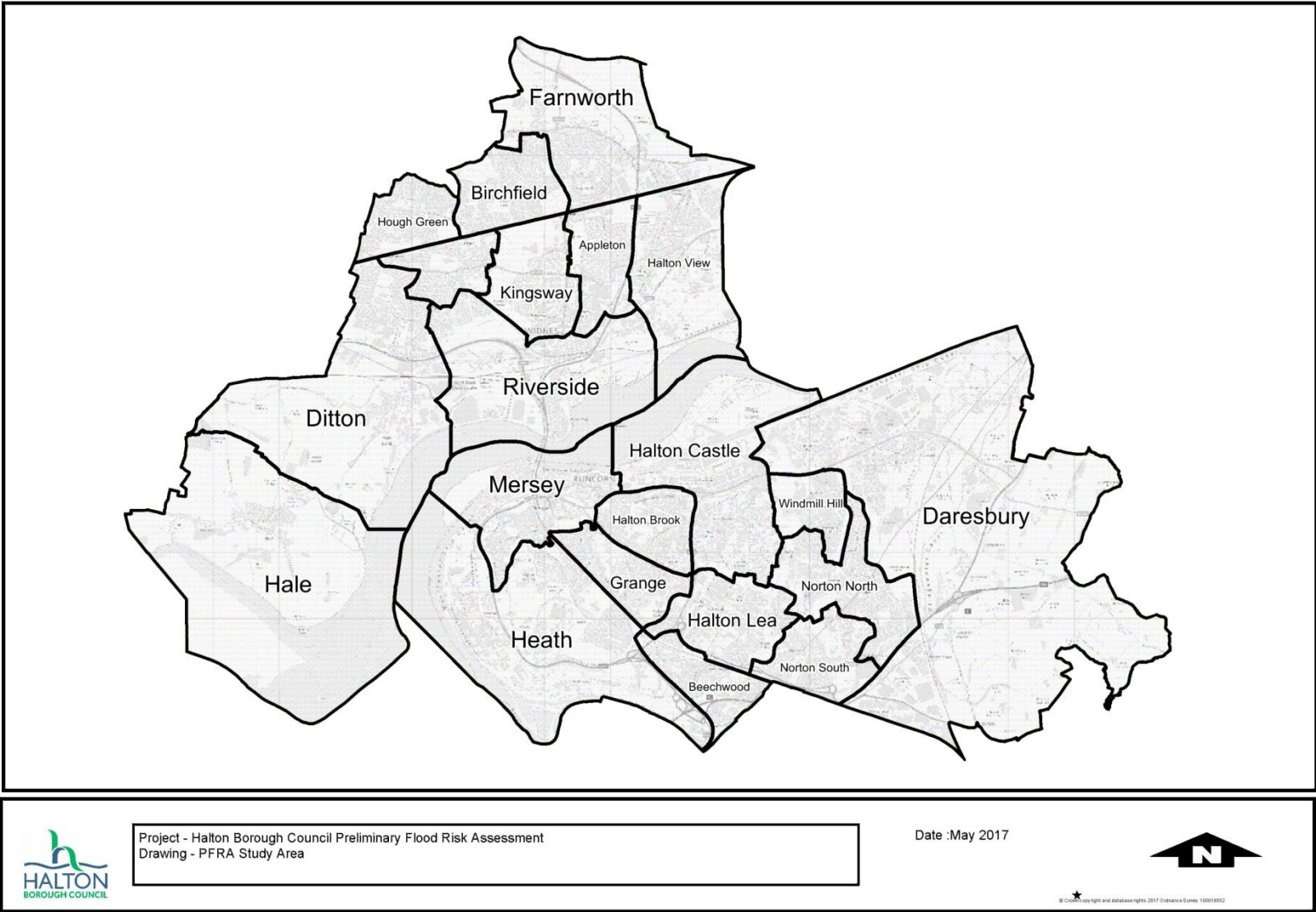


Appendix A: Figures

Figure 1	Halton Borough Council Boundary and PFRA Study Area
Figure 2	DEFRA / EA Identified 1km ² Squares Above Flood Risk Threshold (<i>Blue Squares</i>)
Figure 3	Halton Borough Council Spatial Distribution of Historic Flood Records
Figure 4	Classification of Watercourses Within The Administrative Boundary of Halton BC
Figure 5	United Utilities / Cheshire Fire Spatial Distribution of Historic Flood Records
Figure 6	Environment Agency Risk of Flooding from Surface Water Dataset (<i>December 2013</i>)
Figure 7	Environment Agency Areas Susceptible to Groundwater Flooding Map (<i>AStGWF</i>)
Figure 8	Environment Agency Flood Map for Planning (<i>Feb 2017</i>)
Figure 9	Ordinary Watercourse Model Outputs from Cheshire Mid-Mersey Partnership Project (<i>CH2M</i>)
Figures 10a-h	Critical Services and Property Reviews
Figure 11	PFRA2016 Method1 Clusters 100 with BS BS12 NW and Mids (<i>PDF provided by the EA</i>)
Figure 12	PFRA2016 Method1 Clusters 100 with NumPeople BS12 NW and Mids (<i>PDF provided by the EA</i>)
Figure 13	PFRA2016 People sensitivity CCproxy England (<i>PDF provided by the EA</i>)
Figure 14	PFRA2016 People sensitivity CCProxy LLFAs (<i>PDF provided by the EA</i>)
Figure 15	Indicative Flood Risk Areas (<i>PDF provided by the EA</i>)

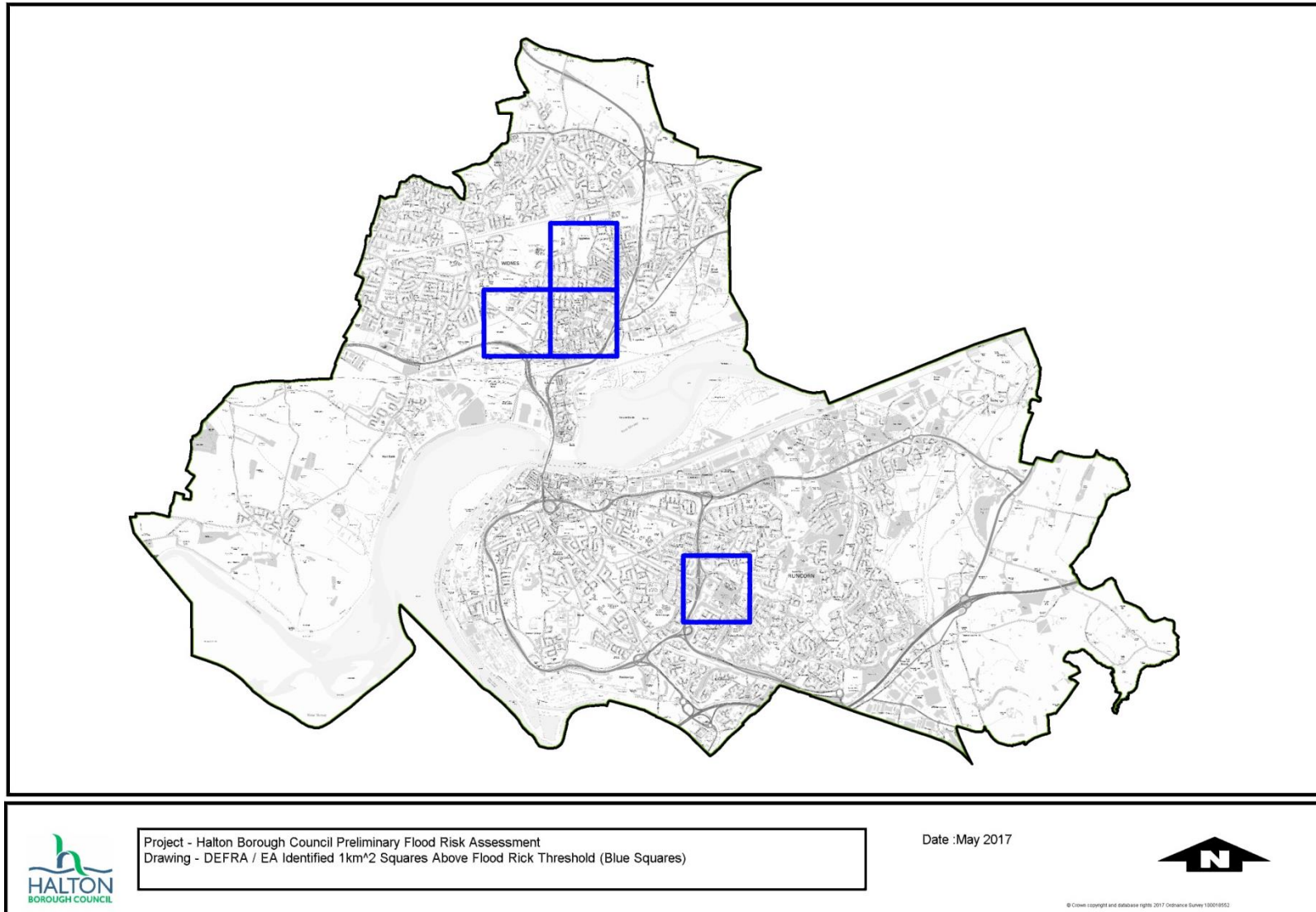
Appendix A: Figures

Figure 1 - Halton Borough Council Boundary and PFRA Study Area



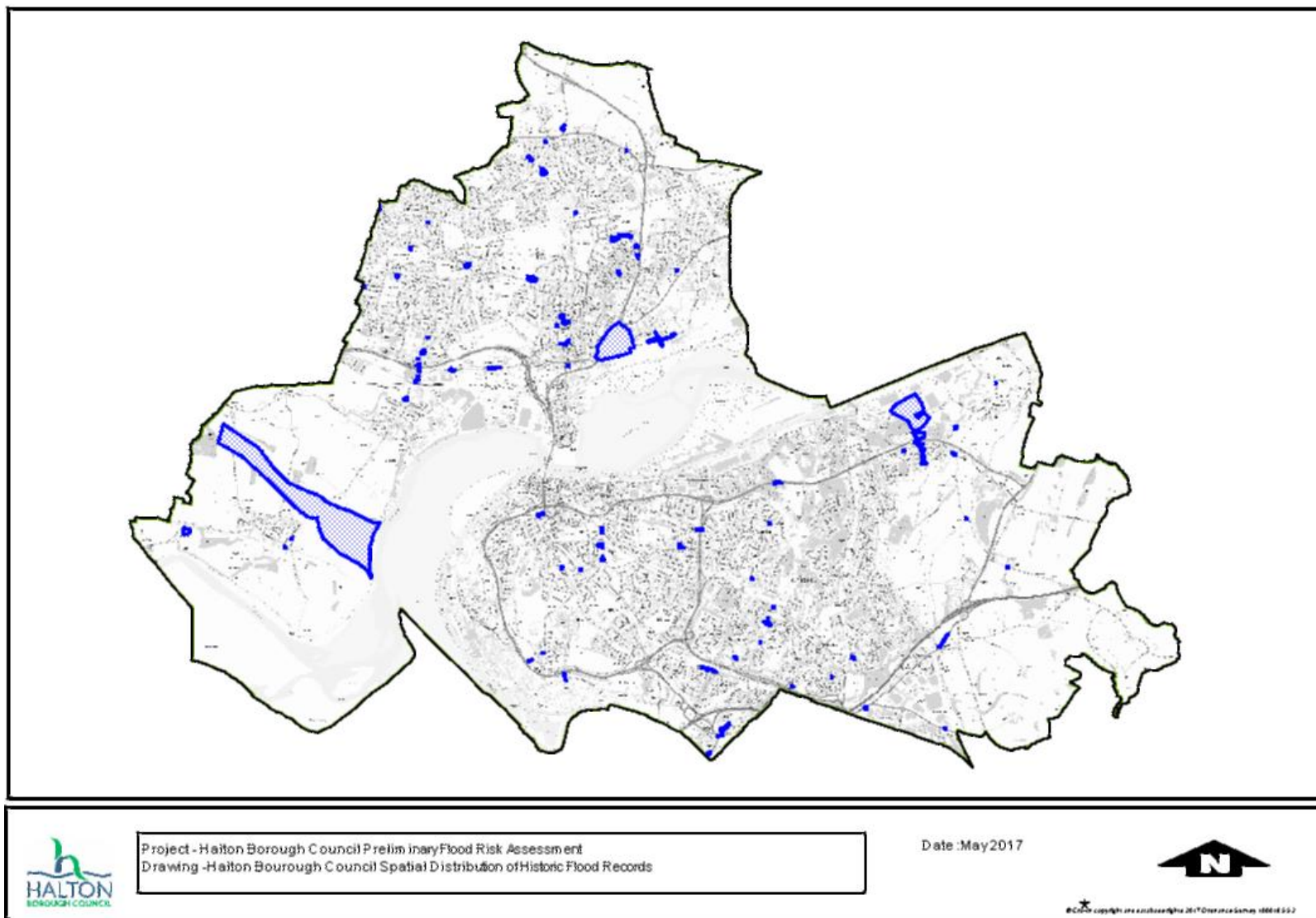
Appendix A: Figures

Figure 2 - DEFRA / EA Identified 1km² Squares Above Flood Risk Threshold (Blue Squares)



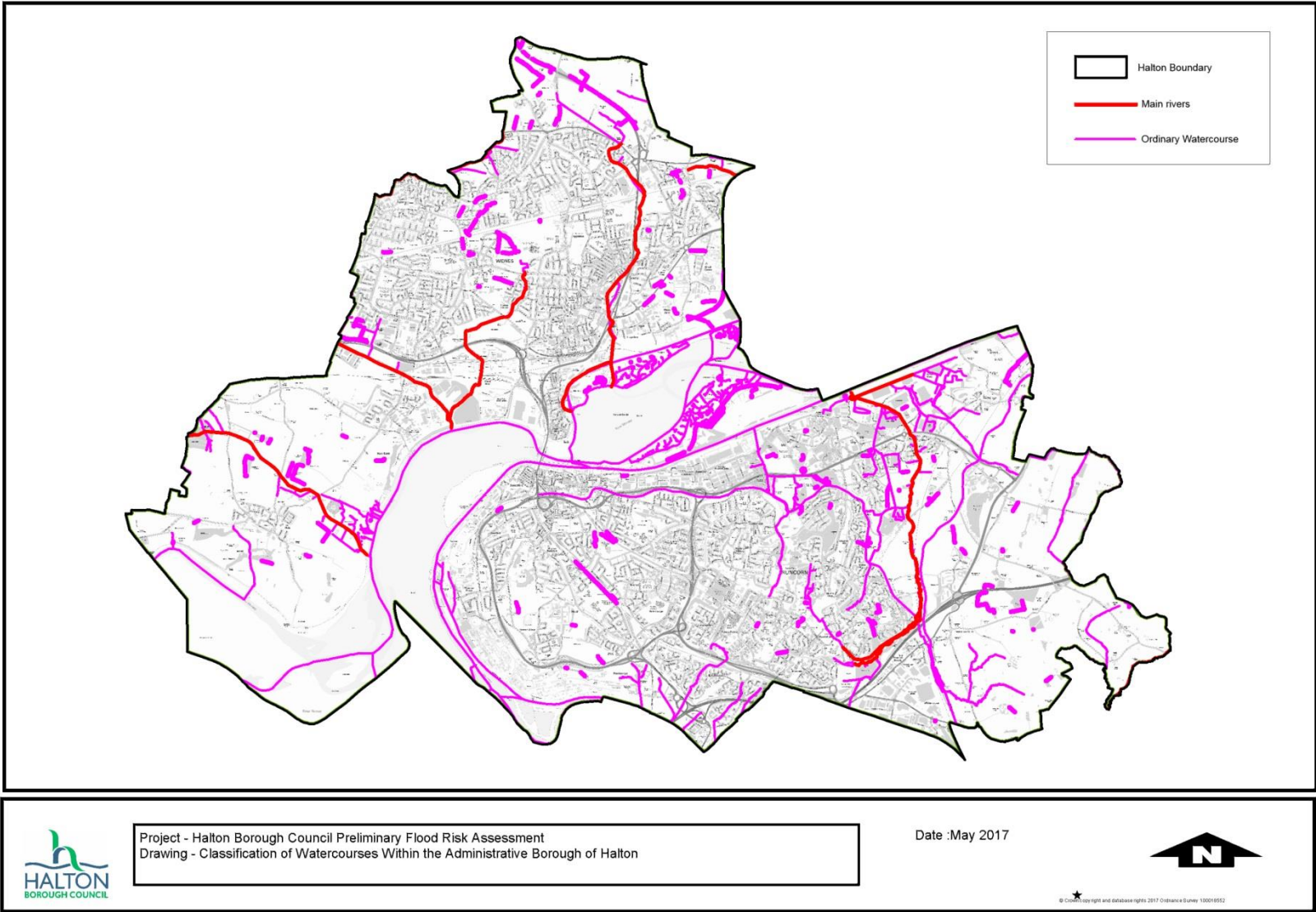
Appendix A: Figures

Figure 3 - Halton Borough Council Spatial Distribution of Historic Flood Records



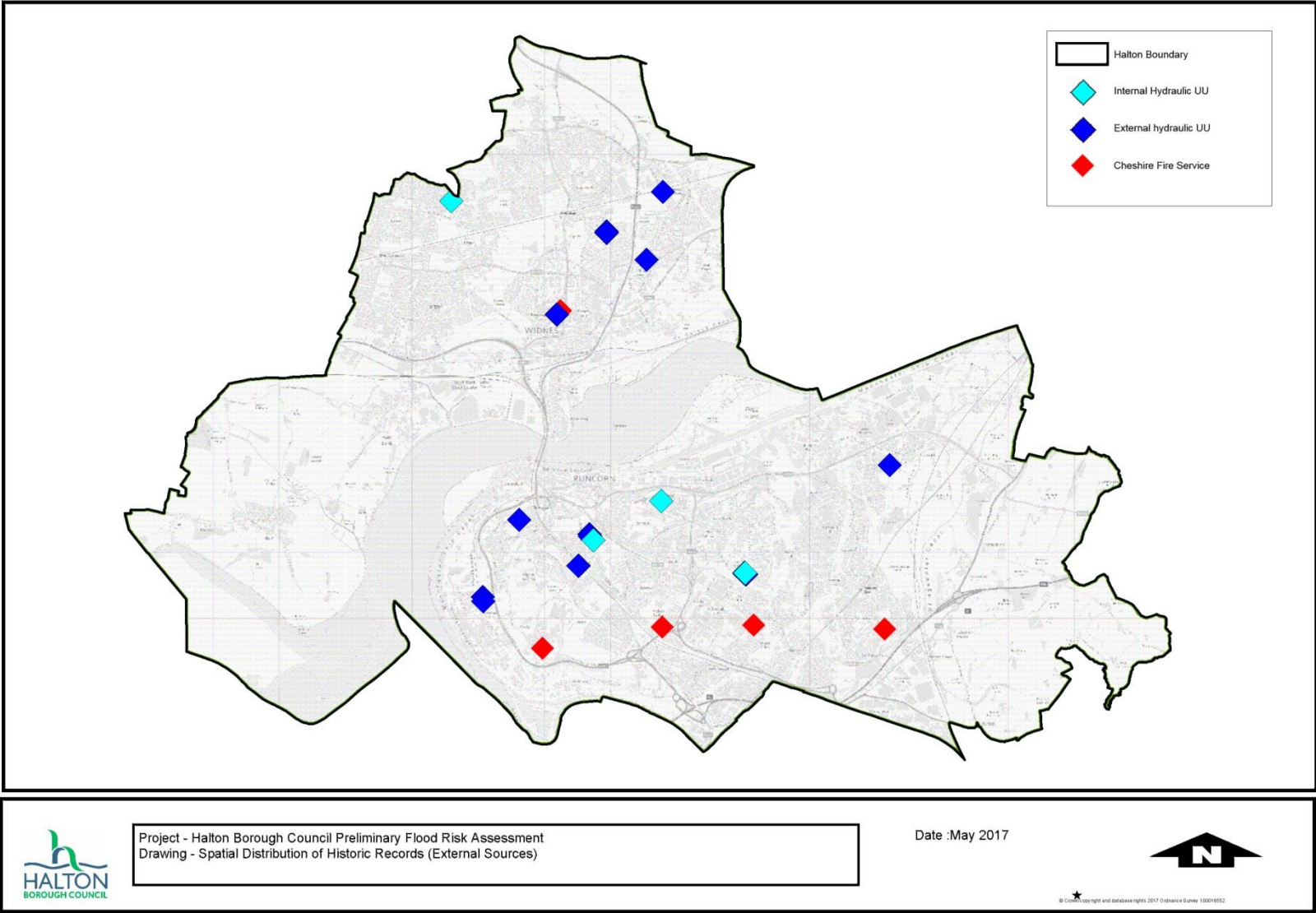
Appendix A: Figures

Figure 4 - Classification of Watercourses Within The Administrative Boundary of Halton BC



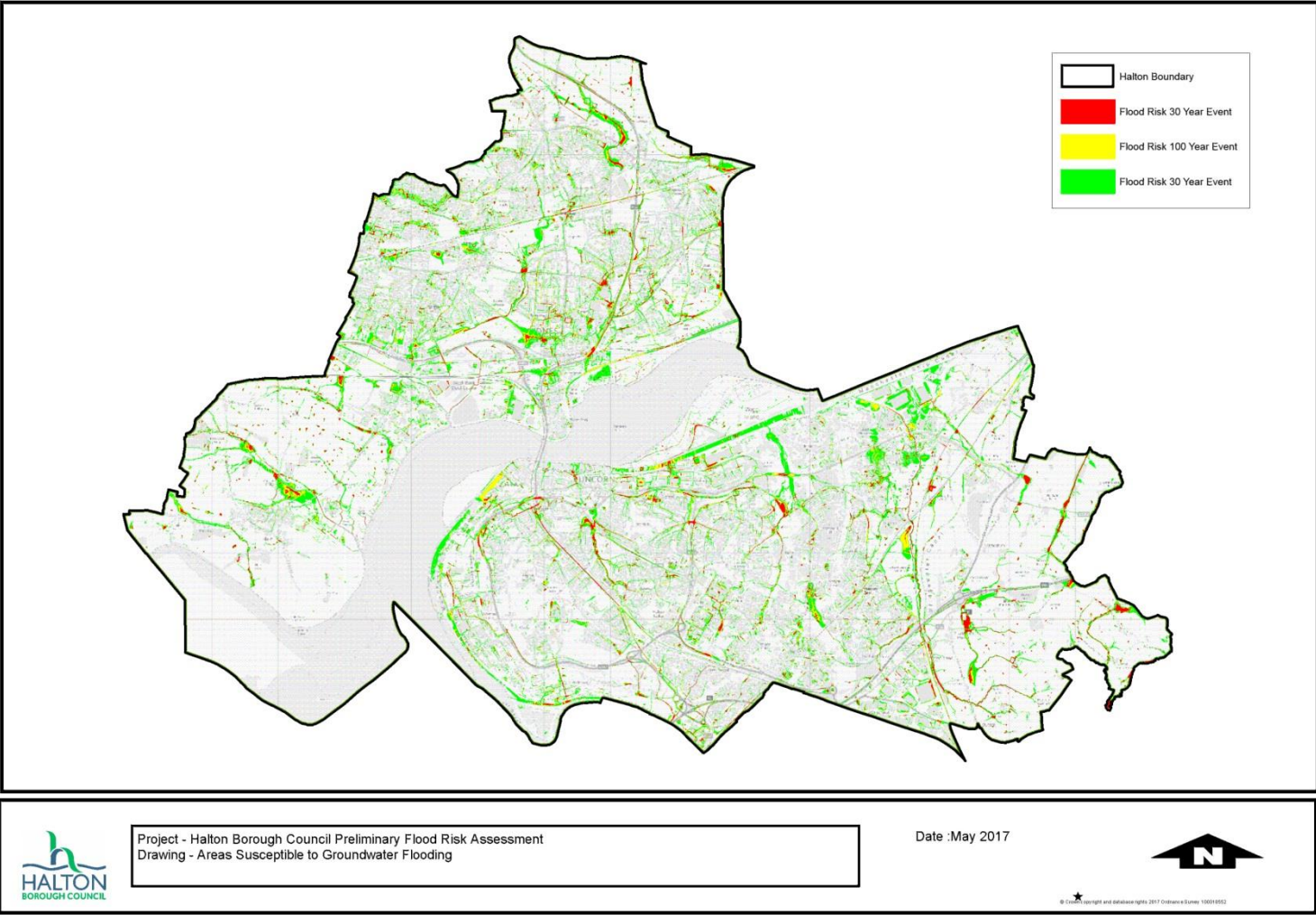
Appendix A: Figures

Figure 5 - United Utilities / Cheshire Fire Spatial Distribution of Historic Flood Records



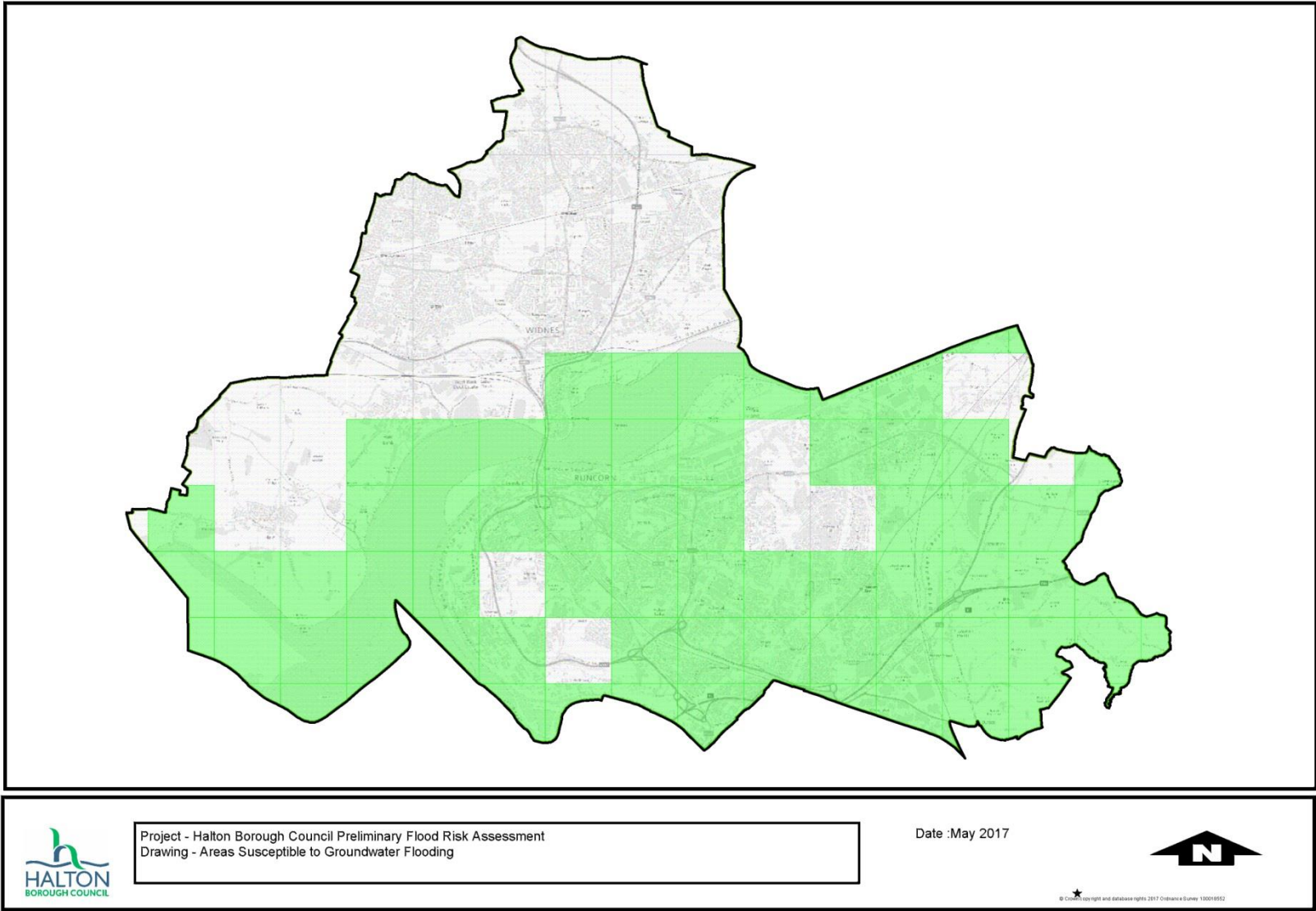
Appendix A: Figures

Figure 6 - Environment Agency Risk of Flooding from Surface Water Dataset (December 2013)



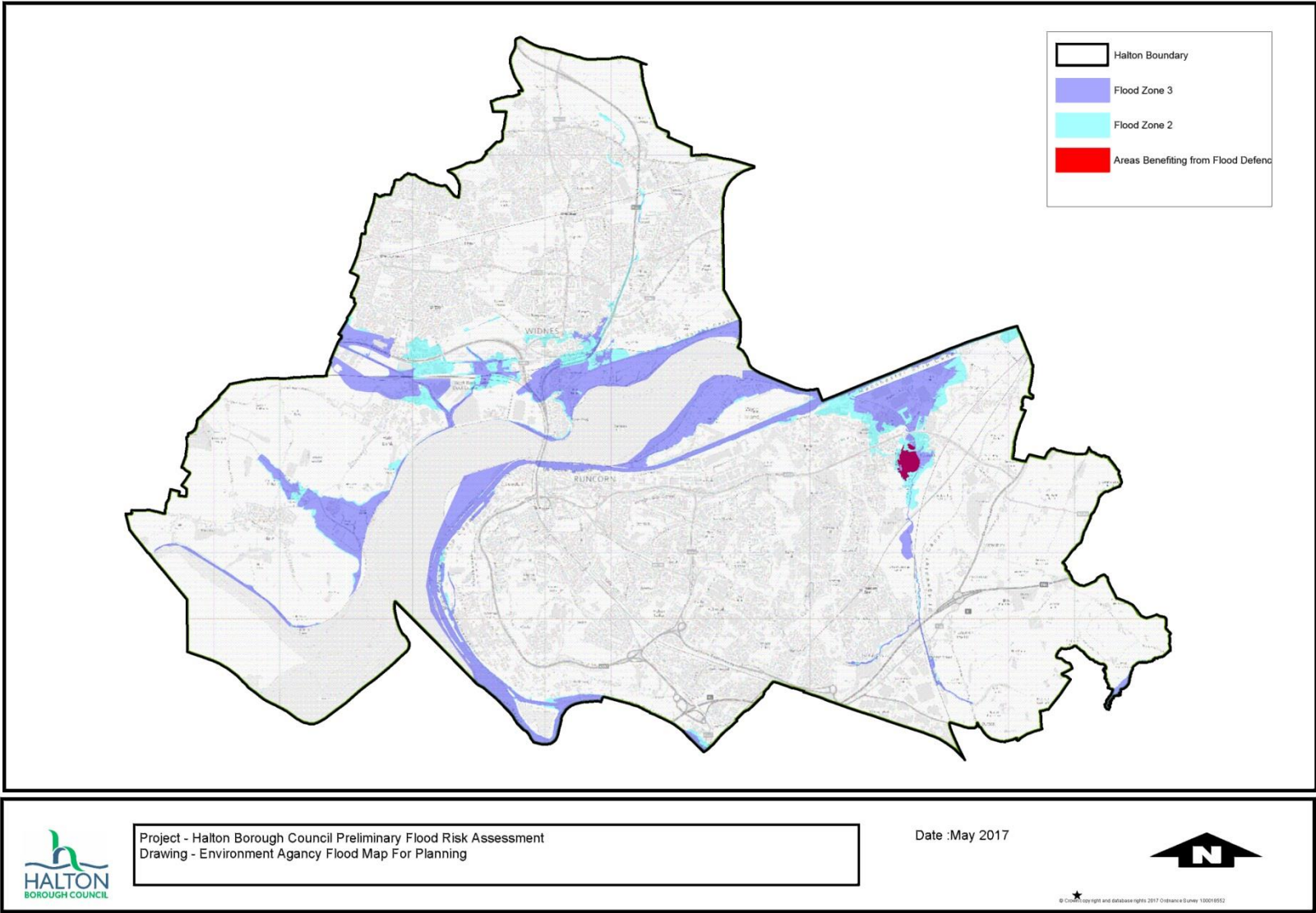
Appendix A: Figures

Figure 7 - Environment Agency Areas Susceptible to Groundwater Flooding Map (AStGWF)



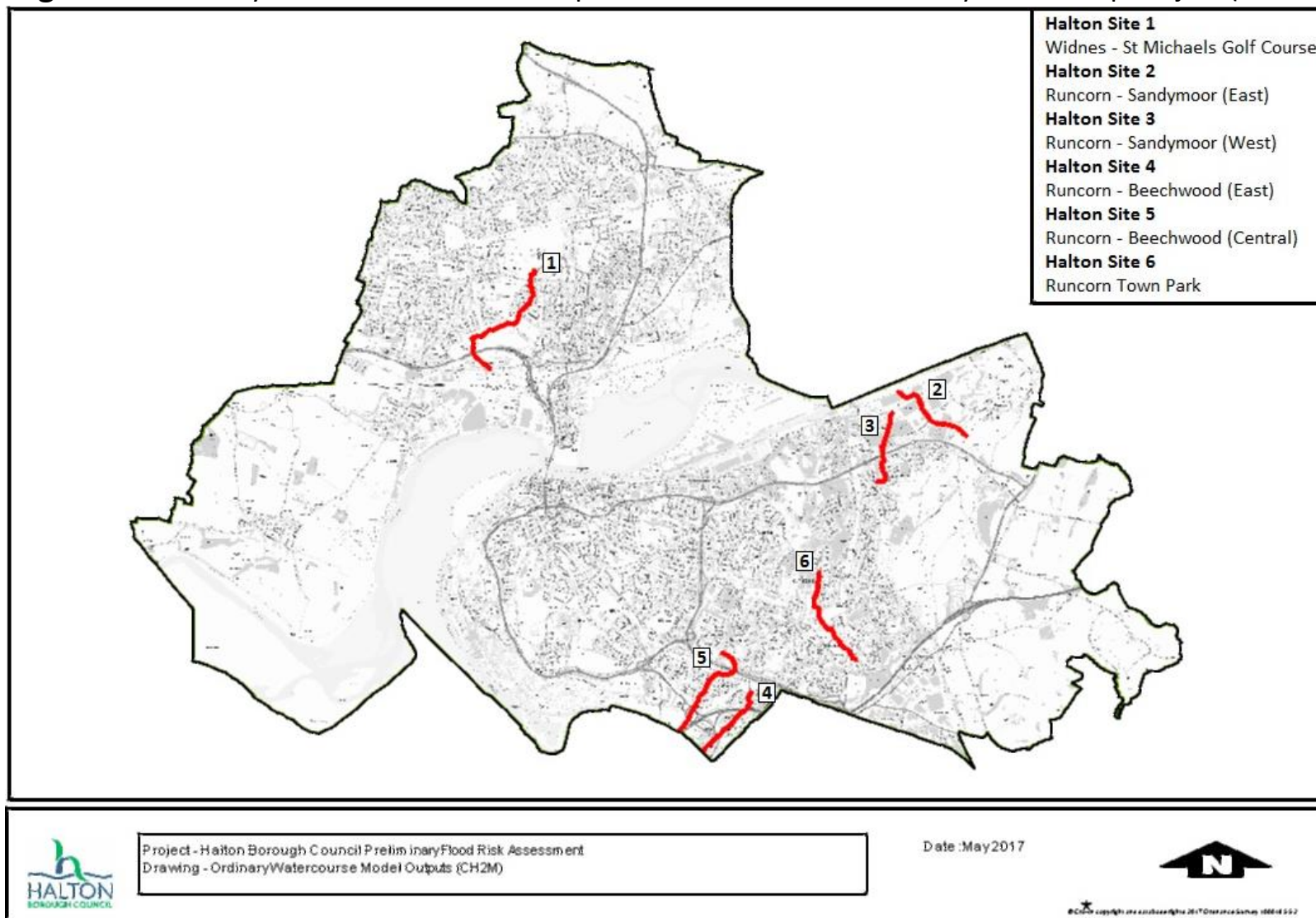
Appendix A: Figures

Figure 8 - Environment Agency Flood Map for Planning (Feb 2017)



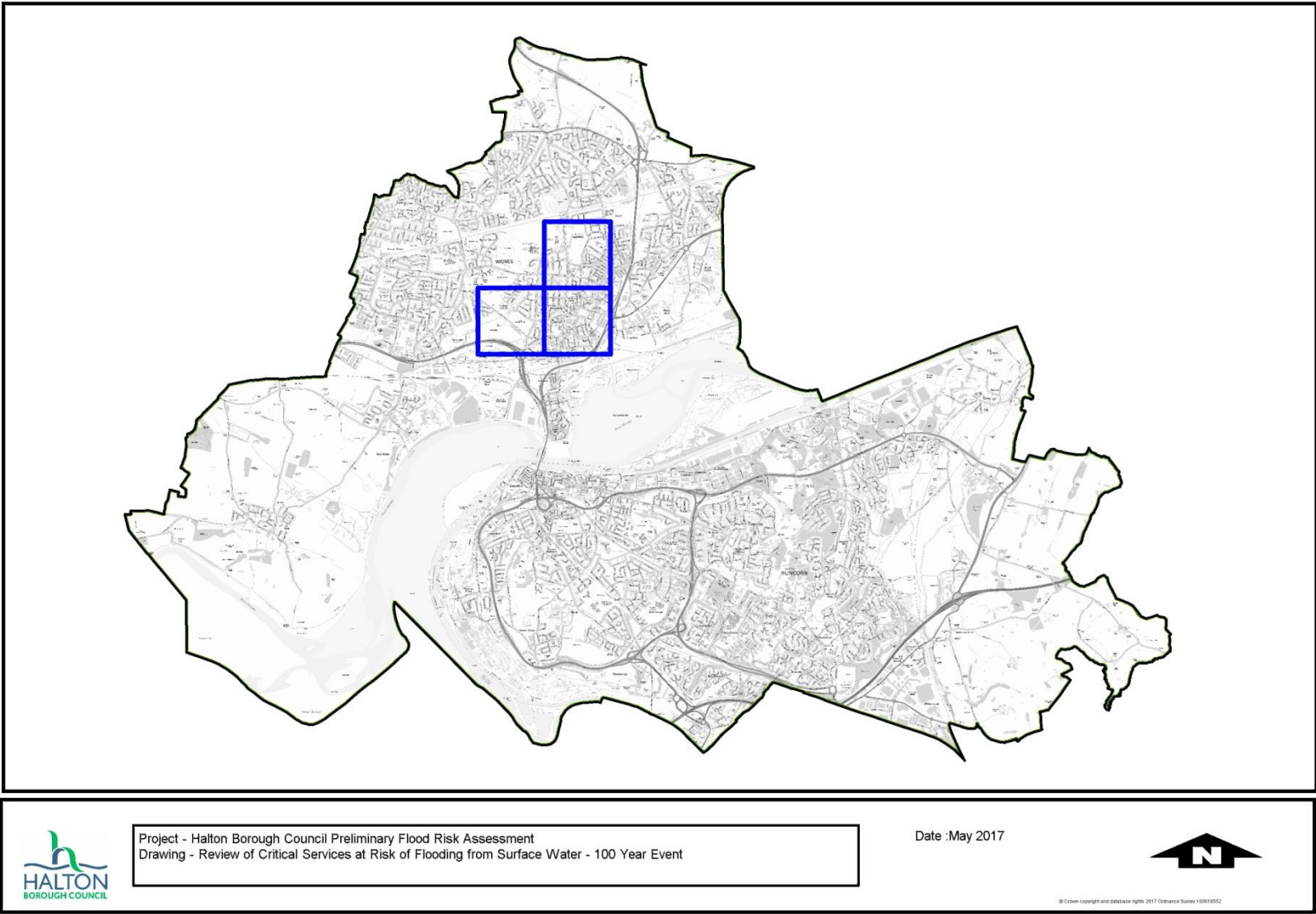
Appendix A: Figures

Figure 9 - Ordinary Watercourse Model Outputs from Cheshire Mid-Mersey Partnership Project (CH2M)

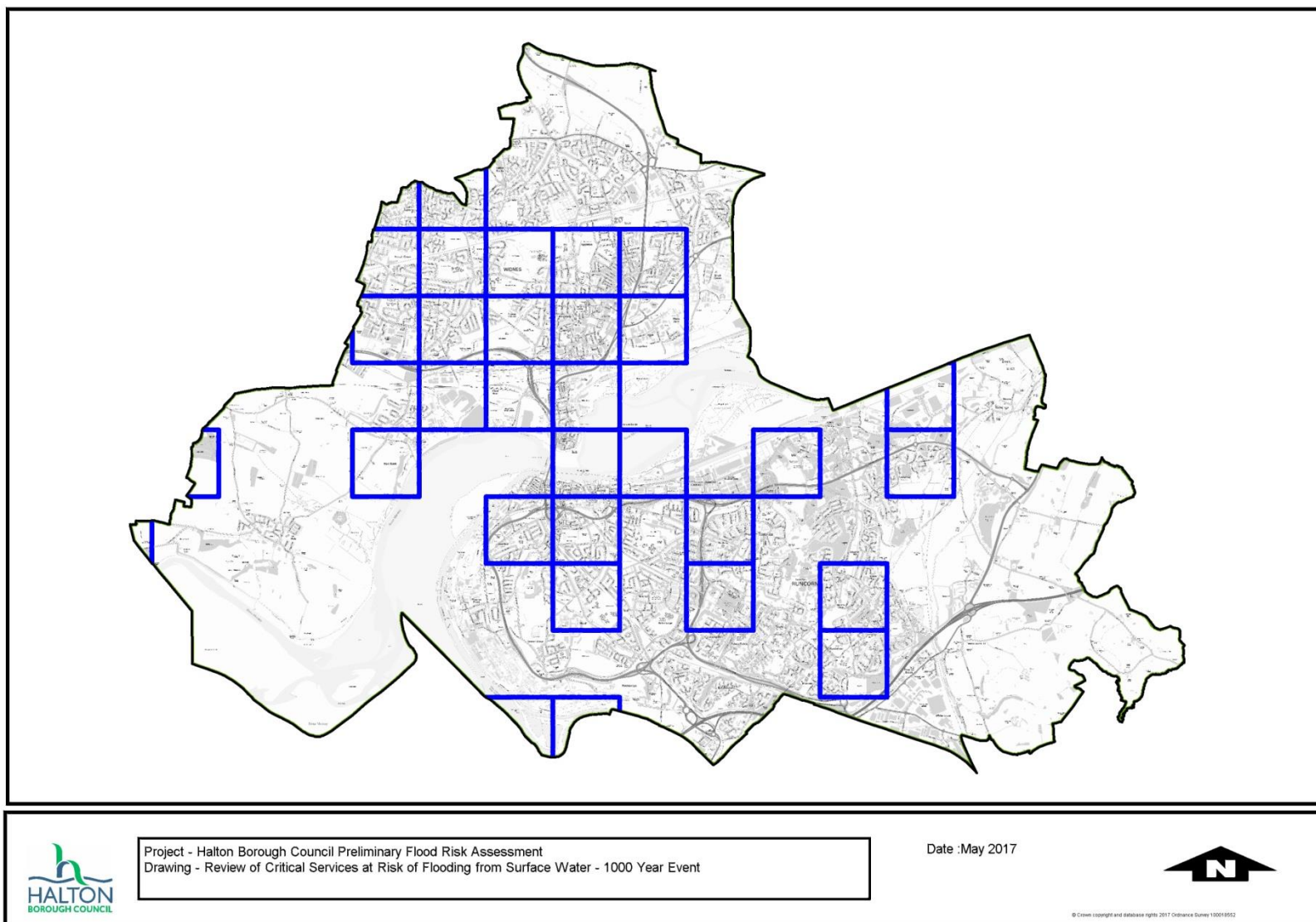


Appendix A: Figures

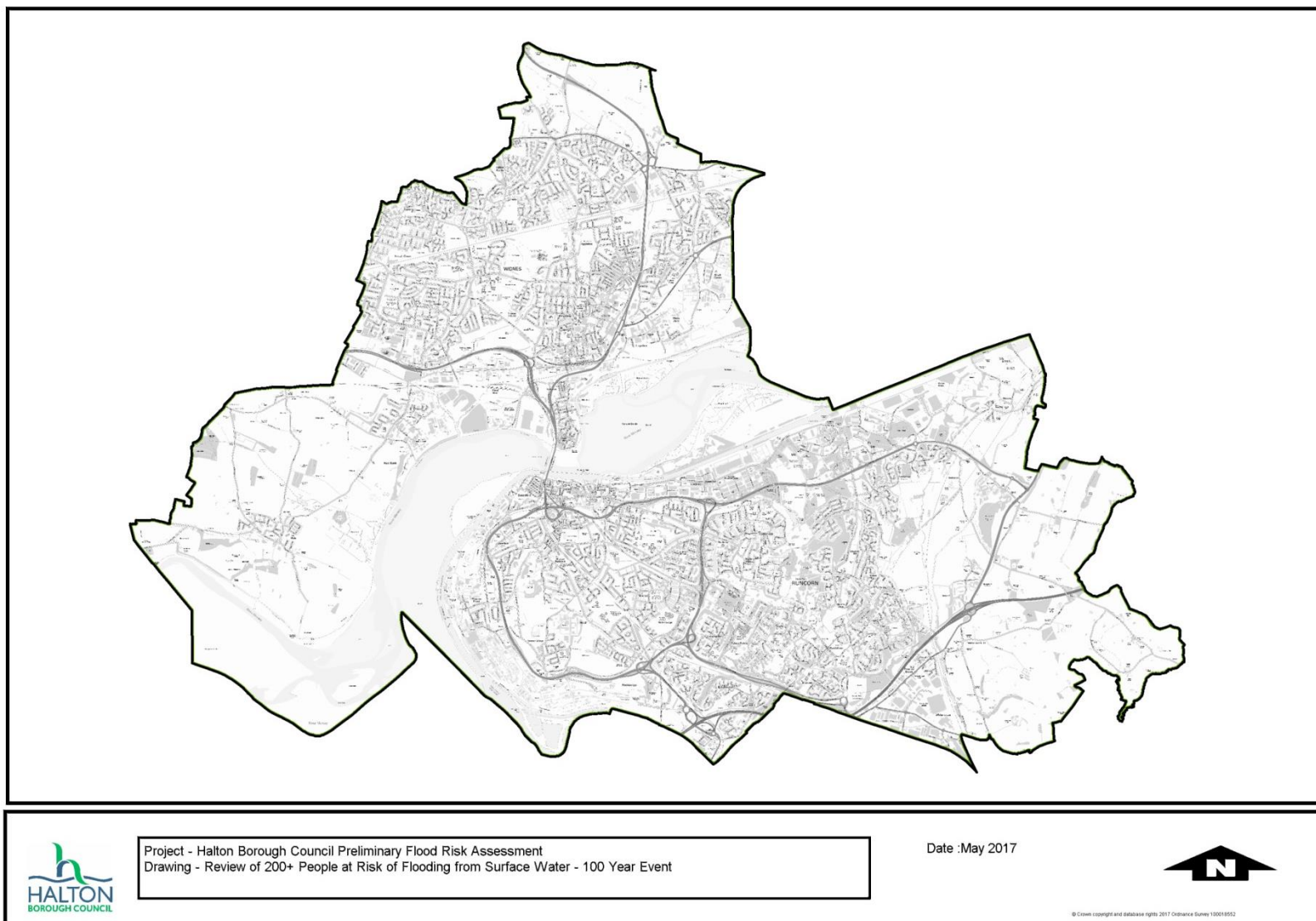
Figures 10a-h - Critical Services and Property Reviews



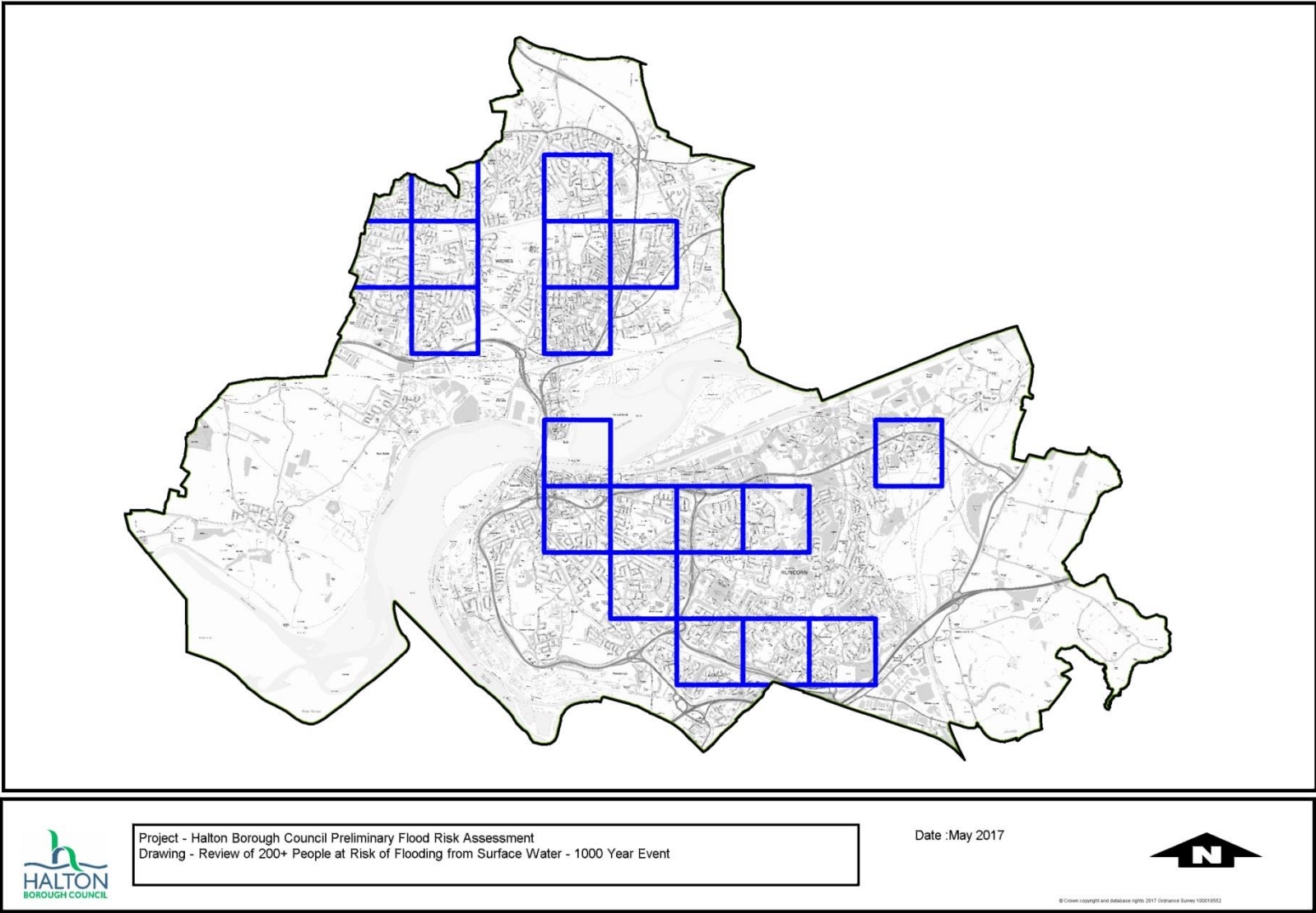
Appendix A: Figures



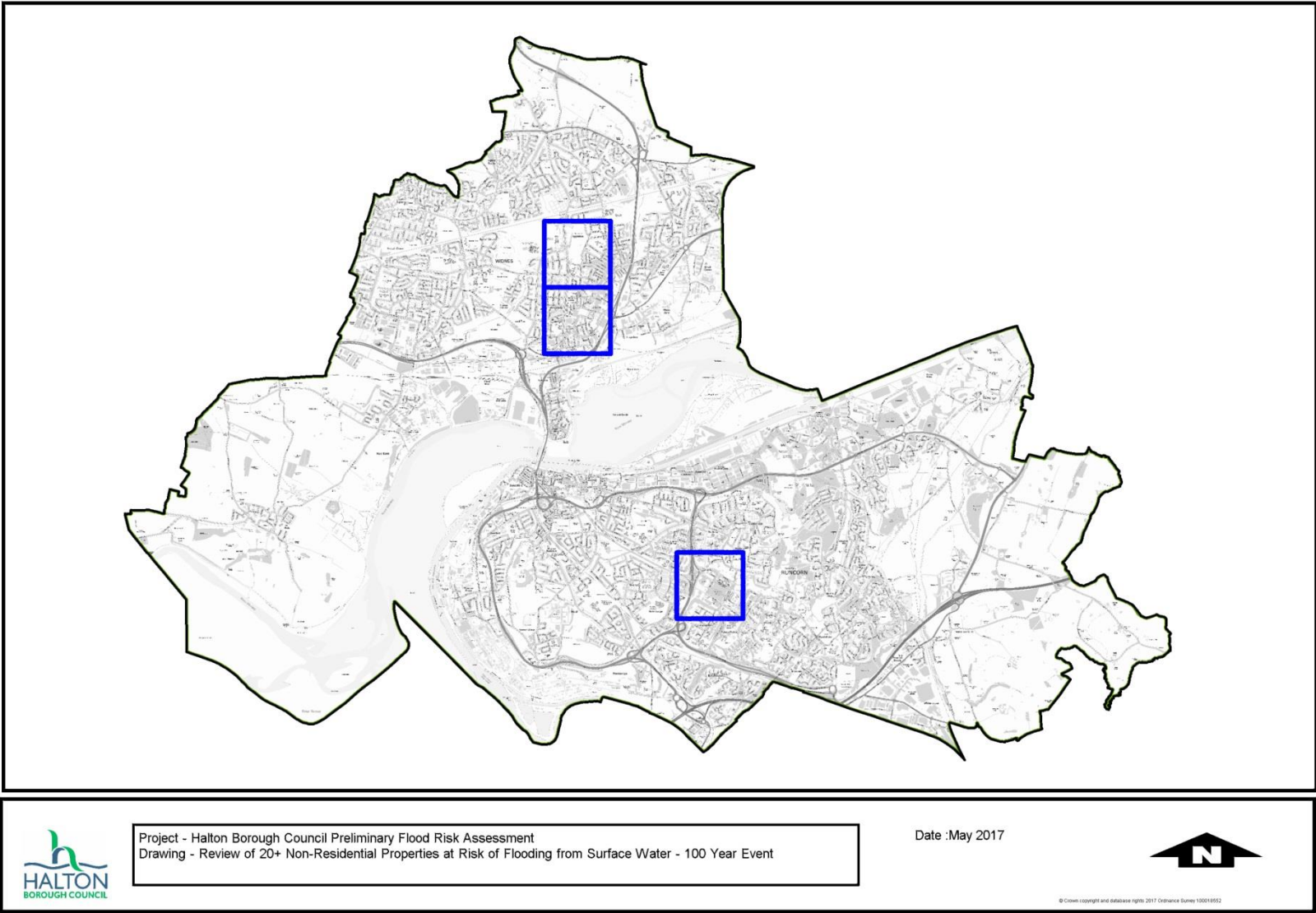
Appendix A: Figures



Appendix A: Figures



Appendix A: Figures



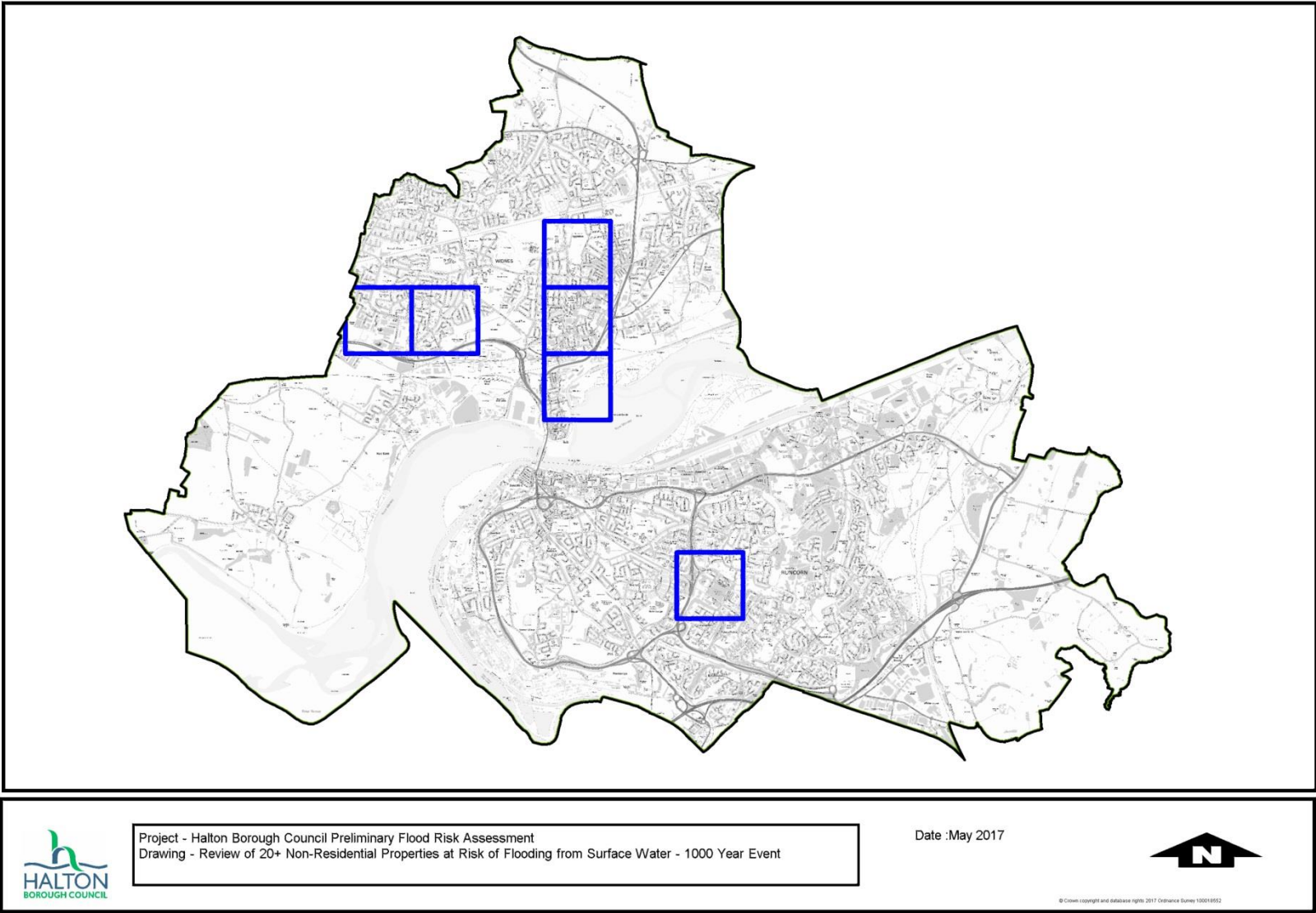
Project - Halton Borough Council Preliminary Flood Risk Assessment
Drawing - Review of 20+ Non-Residential Properties at Risk of Flooding from Surface Water - 100 Year Event

Date :May 2017

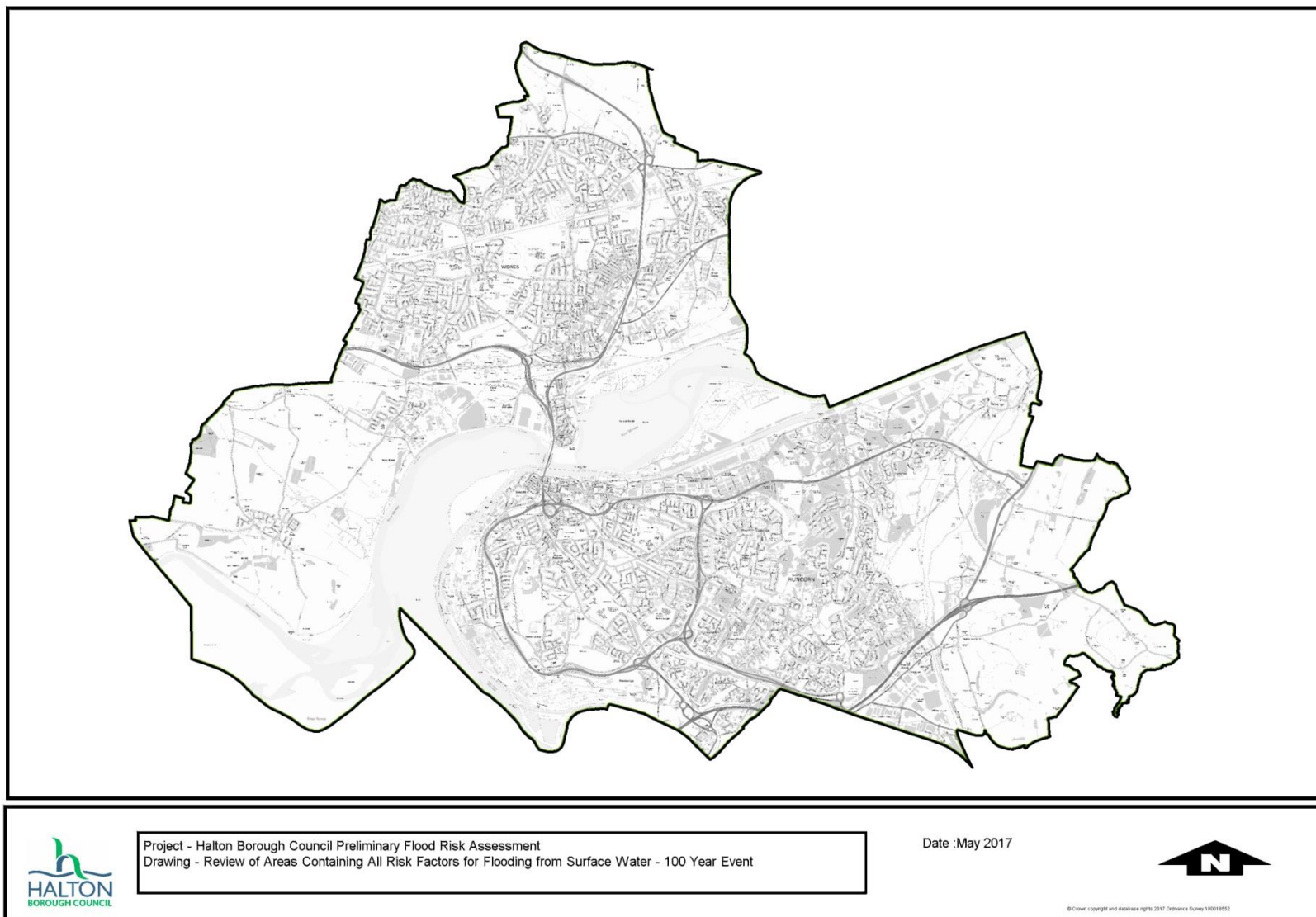


© Crown copyright and database rights 2017 Ordnance Survey 100019552

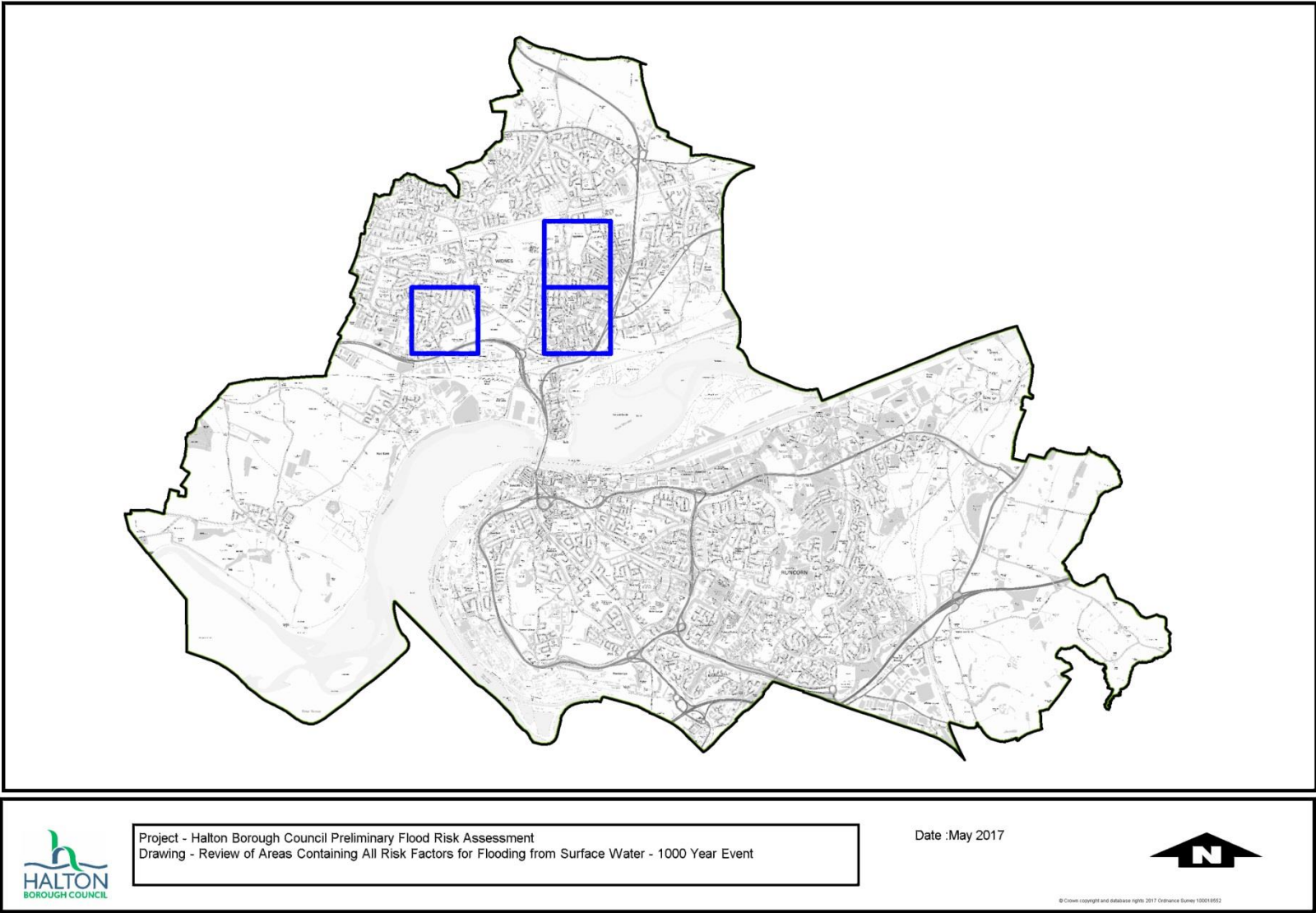
Appendix A: Figures



Appendix A: Figures

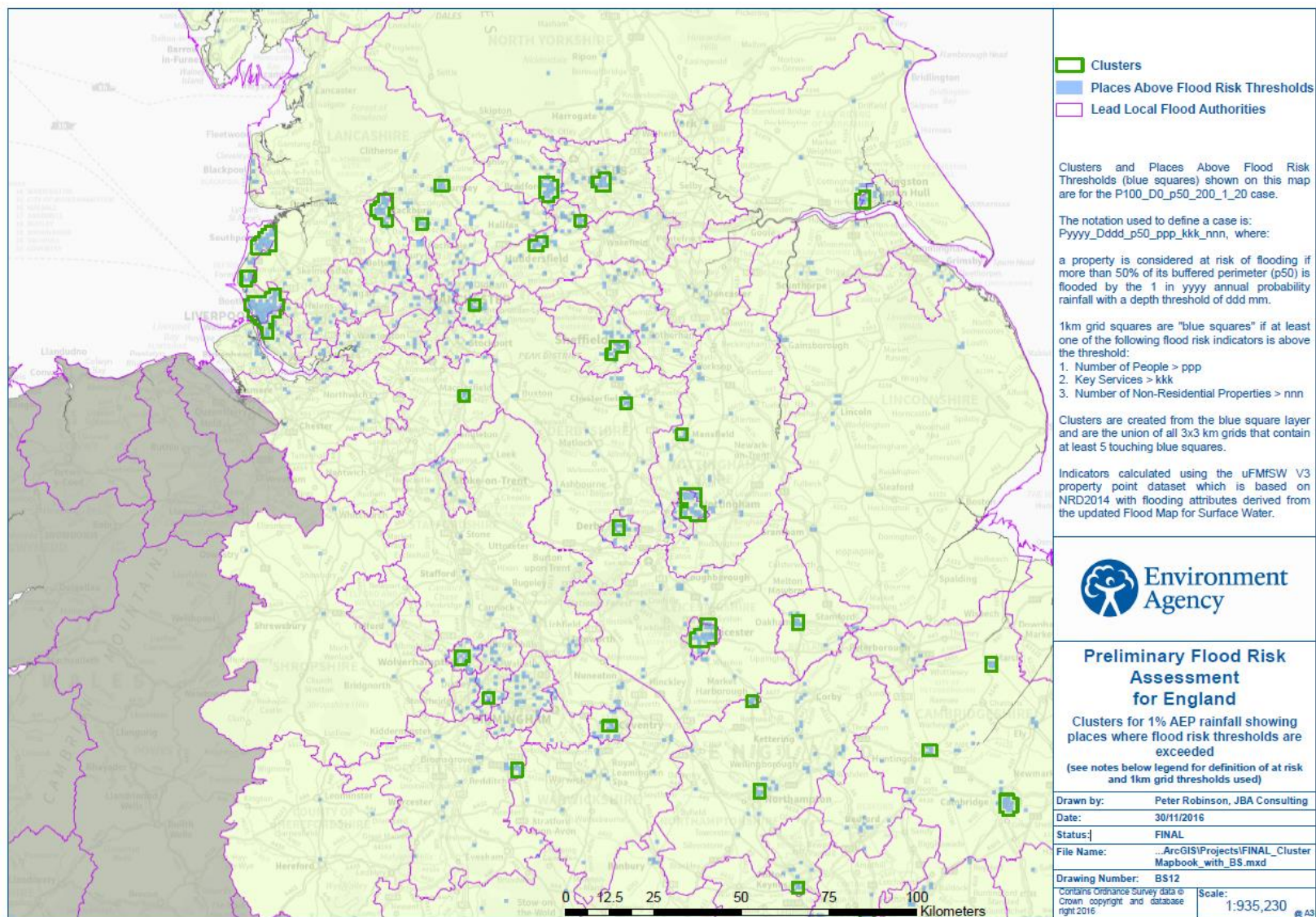


Appendix A: Figures



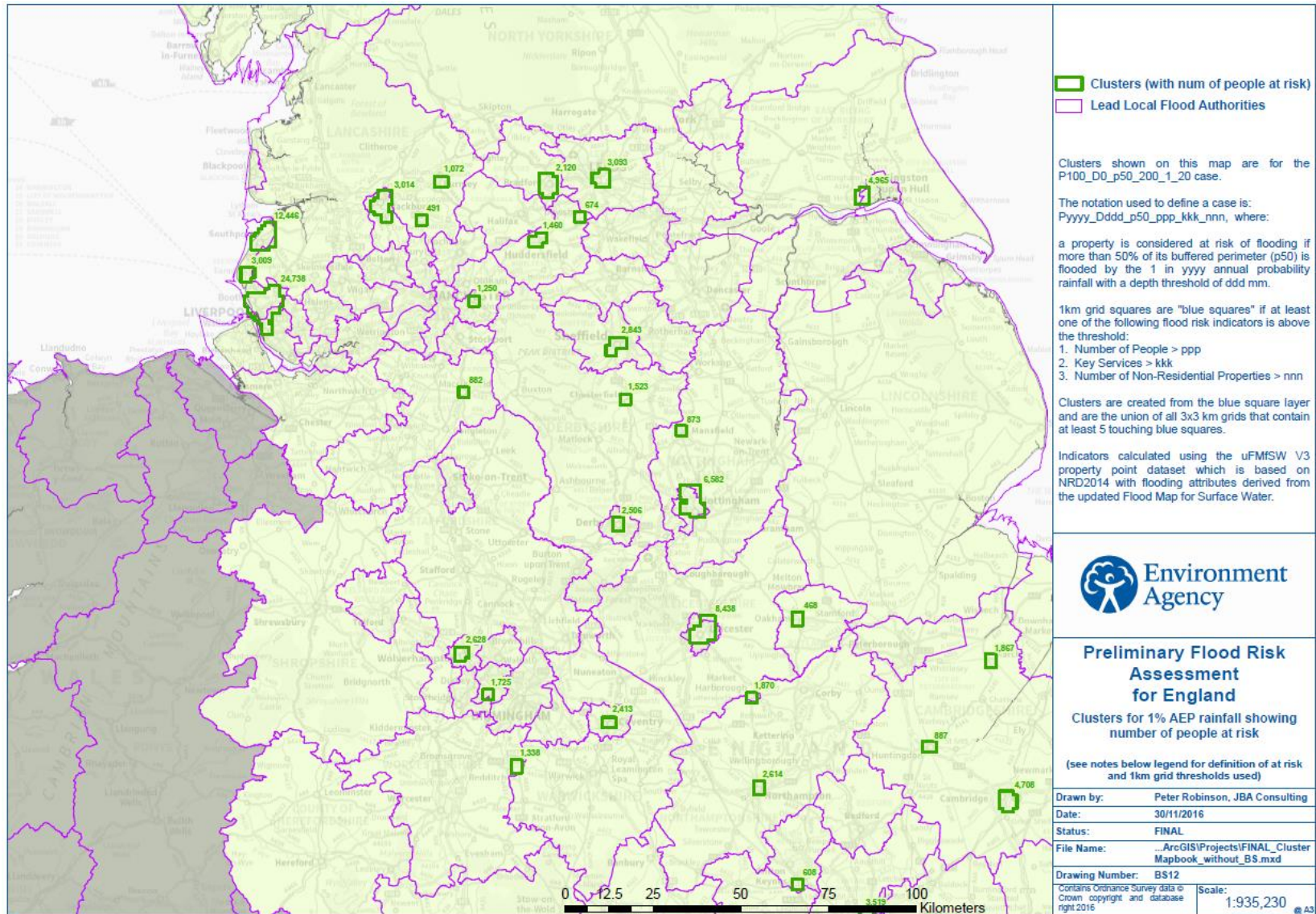
Appendix A: Figures

Figure 11 - PFRA2016 Method1 Clusters 100 with BS BS12 NW and Mids (PDF provided by the EA)



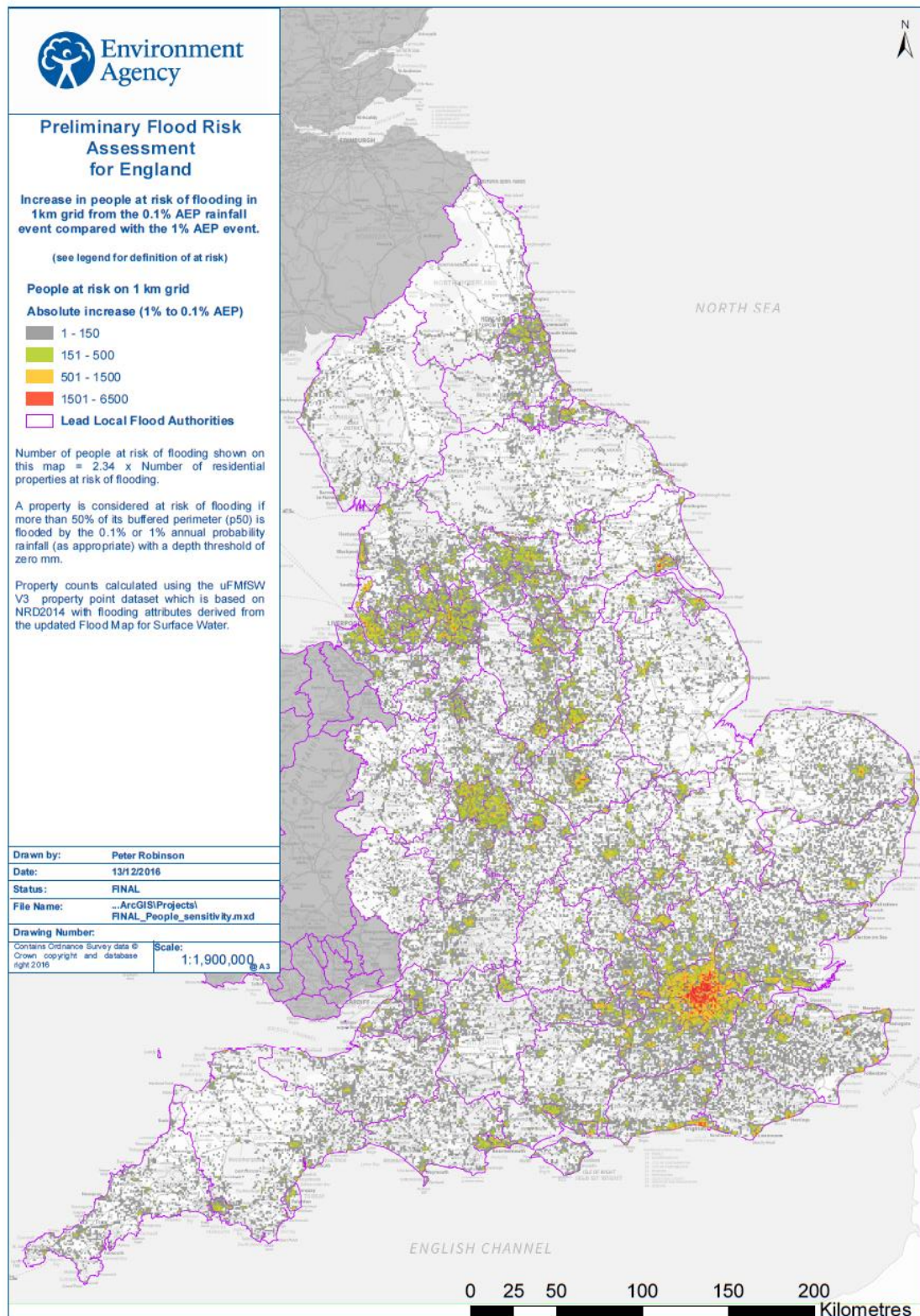
Appendix A: Figures

Figure 12 - PFRA2016 Method1 Clusters 100 with NumPeople BS12 NW and Mids (PDF provided by the EA)



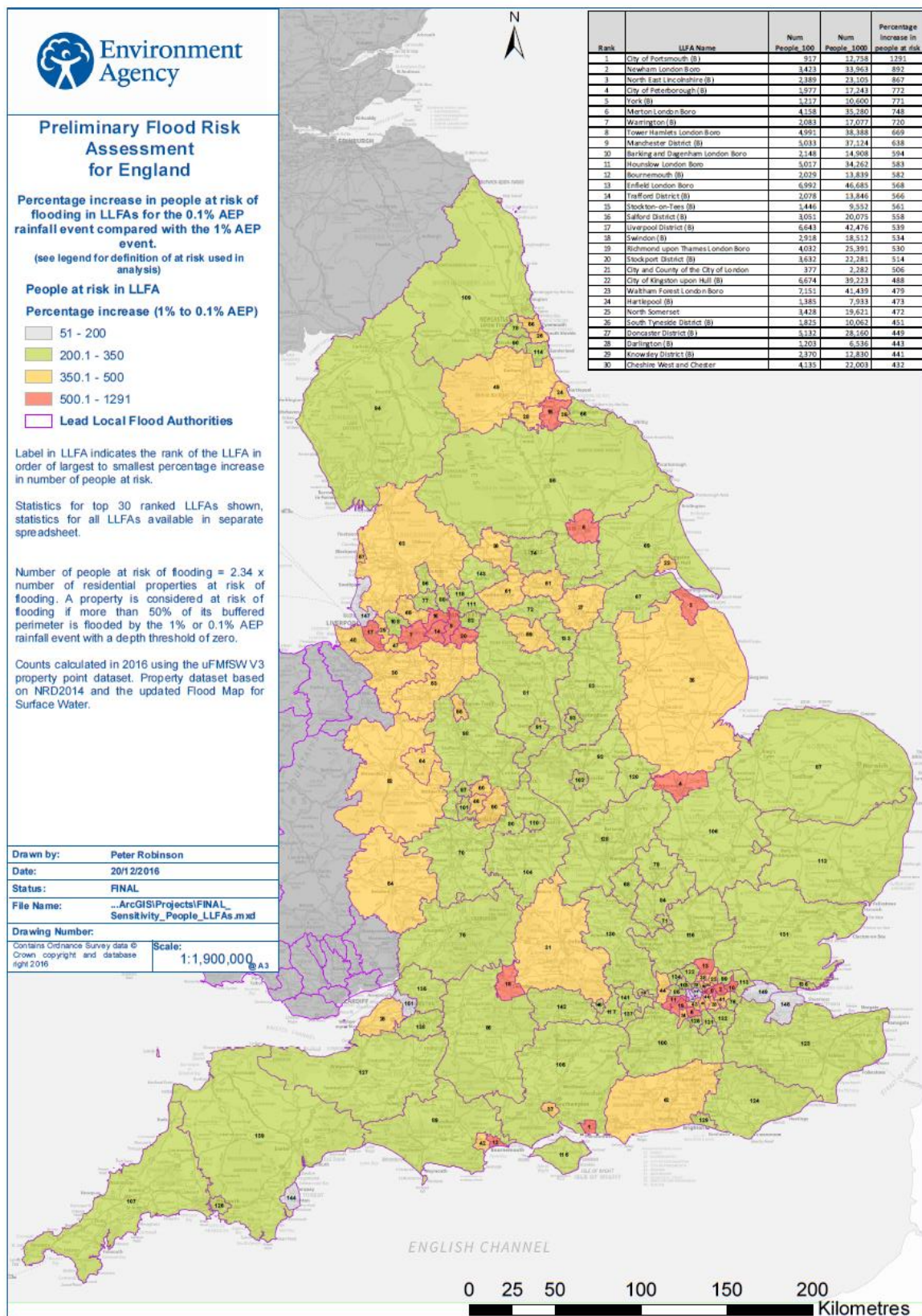
Appendix A: Figures

Figure 13 - PFRA2016 People sensitivity CCproxy England (PDF provided by the EA)



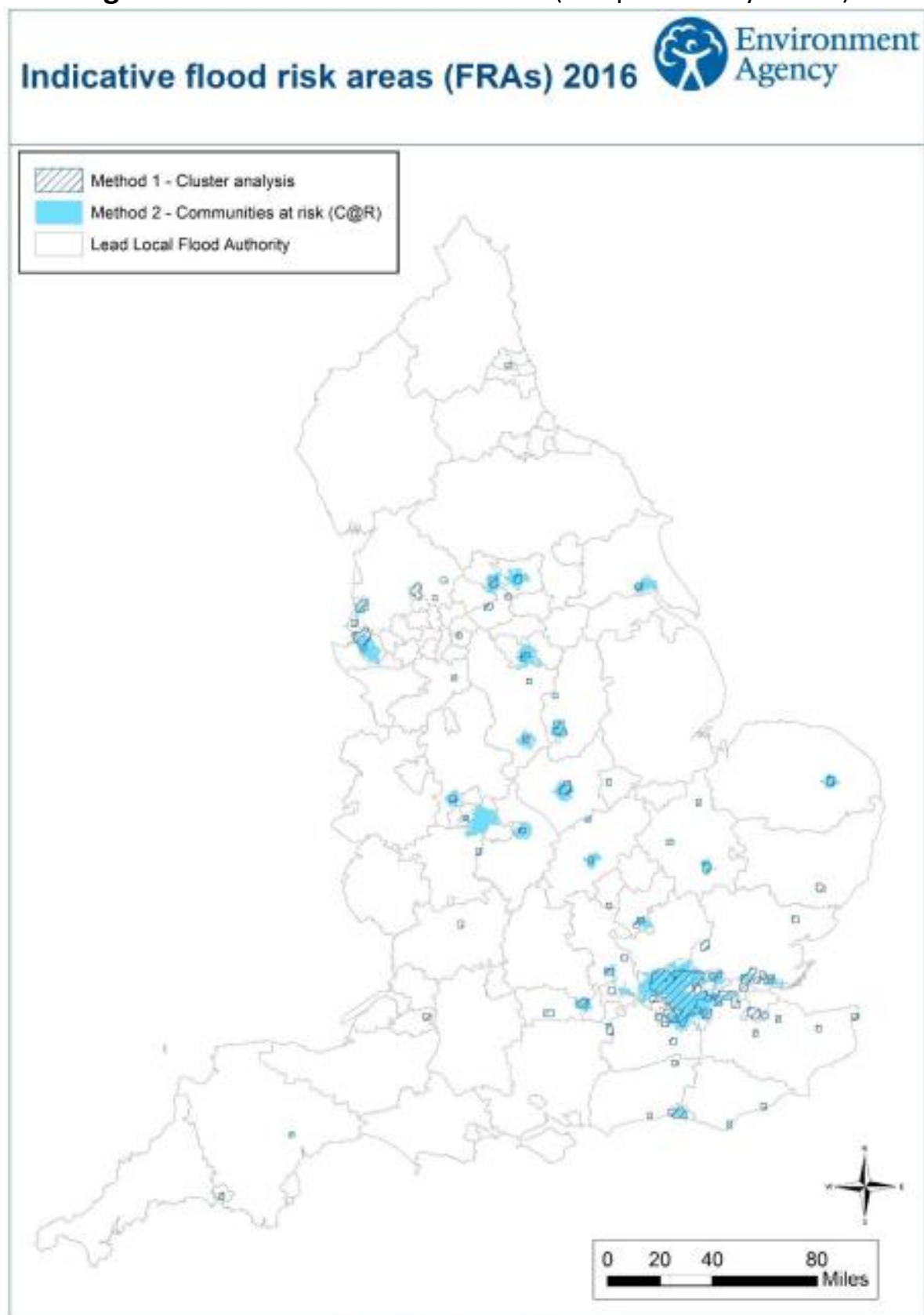
Appendix A: Figures

Figure 14 - PFRA2016 People sensitivity CCProxy LLFAs (PDF provided by the EA)



Appendix A: Figures

Figure 15 - Indicative Flood Risk Areas (PDF provided by the EA)



Analysis by Environment Agency
National Modelling and Forecasting Service

© Crown Copyright and database right 2016. All rights reserved. Ordnance Survey license number 100026380. © Environment Agency 2016. All rights reserved.